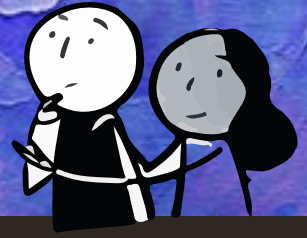


# THE RESILIENCE NETWORK

LONDON BOROUGH OF CAMDEN



## DIGITAL / COLLECTIVE // 15TH FEBRUARY 2021

ABOUT D/C

Born out of a global pandemic, the digital collective is your weekly one-stop-shop, listing the very best FREE-to-access events, groups, classes and activities from the Camden Community. Just click on the [link](#) to access the FREE activity of your choice.

**Scroll down for:** Healthy Minds offers, community news and activities you can enjoy from home.



VoiceAbility



Likewise



### MONDAY

7am until 8am [Online Yoga](#)

> Swiss Cottage

8am until 08.30am [Qigong practice](#)

> College of Medicine

9:30am until 10am [Exercise for All](#)

> College of Medicine

10am [Latin dance for BAME women](#)

> Pascal Theatre Company

11am until 11.30am [Virtual 'Cuppa' for Carers](#)

> Mobilise

1.30pm until 3pm [Men's cooking club](#)

> Abbey Community Centre

2pm until 3pm [Singing](#)

> Golden Years

3:30pm until 4:30pm [Mindfulness Sessions](#)

> Healthy Minds CP

### TUESDAY

7am until 8am [Online Yoga](#) > Swiss Cottage

8am until 08.30am [Qigong practice](#)

> College of Medicine

9:30am until 10am [Exercise for All](#)

> College of Medicine

10am until 11am [De-Stressing and Relaxing 50+](#)

> Third Age Project

10am until 11am [Tai chi 60+](#)

> Abbey Community Centre

10:45am until 2pm [Outdoor Volunteering](#)

> TCV Camden Green Gym

1pm until 2pm [Facial massage for women](#)

> Women+Health

2:30pm-3:30pm [Pancakes](#)

> North London Cares

2.30pm until 3.30pm [Colouring Calm 60+](#)

> Abbey Community Centre

4pm until 4.30pm [Virtual 'Cuppa' for Carers](#)

> Mobilise

5:30pm until 7pm [Covid Vaccine Q+A](#)

> Healthwatch Camden

6:30pm-7:30pm [Pancake Day](#)

> North London Cares

6:30pm until 7:30pm [Mindfulness practice](#)

> College of Medicine

7pm until 8pm [Reiki Art Therapy for women](#)

> Women+Health

### WEDNESDAY

7am until 8am [Online Yoga](#) > Swiss Cottage

8am until 08.30am [Qigong practice](#)

> College of Medicine

9:30am until 10am [Exercise for All](#)

> College of Medicine

10am until 11am **Wake Up Wednesday for women**

> Women+Health

10am until 11am **Zoom Social Group**

> Golden Years

10:30am **Gentle Movement/Chair Based Exercise for BAME women** > Pascal Theatre Company

11am until 12pm **Seated exercise 60+**

> Abbey Community Centre

11:30am until 12:30pm **Men's Fitness**

> Abbey Community Centre

2pm until 3:30pm **Freedom to Make** (virtual knitting & textiles workshops) > Free Space Project

4pm until 4.30pm **Virtual 'Cuppa' for Carers**

> Mobilise

4pm until 5pm **The Minded Clinic online classes**

> The Minded Clinic

5pm until 7pm **Code Club (please email for details)** > West Euston Partnership

6:30pm until 7:30pm **Yoga Nidra Meditation**

> Women+Health

## THURSDAY

7am until 8am **Online Yoga**

> Swiss Cottage

8am until 08.30am **Qigong practice**

> College of Medicine

9:30am until 10am **Exercise for All**

> College of Medicine

10:45am until 2pm **Outdoor Volunteering**

> TCV Camden Green Gym

1pm until 2:30pm **Cooking Class**

> Abbey Community Centre

2:30pm-3:30pm **Mardi Gras Festival**

> North London Cares

3:30pm until 4.30pm **Re-cycle-art class**

> Abbey Community Centre

4pm until 4.30pm **Virtual 'Cuppa' for Carers**

> Mobilise

6:30pm until 7:30pm **Mixed Ability Hatha Yoga**

> Women+Health

## FRIDAY

7am until 8am **Online Yoga**

> Swiss Cottage

8am until 08.30am **Qigong practice**

> College of Medicine

9:30am until 10am **Exercise for All**

> College of Medicine

12pm until 1pm **Art History**

> Golden Years

12:30pm until 1pm **Virtual Cuppa for Carers**

> Mobilis

1pm until 2pm **Sound Healing & Guided Meditation** > Women+Health

3pm until 4pm **Mindfulness Meditation**

> Golden Years

4pm until 4:30pm **Virtual Cuppa for Carers**

> Mobilise

TRY IT OUT



Camden LGBT History Month full programme

Recycled crafts

Talk for Health winter programme

Walk and Talk course for older adults

Creativity, nature and mental health activity

Stream sports live

Beach live cams

How to make cloud bread





[Foundling Museum online](#)

[Ways to Move Camden](#)

[Light and Hope memorial](#)

[Jewish Museum online collections](#)

[Online jigsaws](#)

[Animals in winter - hibernation, migration and adaptation](#)

[Healthy Minds, Healthy Bods - weekly Mental Health Packs](#)



ACCESS  
ANYTIME



[Boloh: The Black, Asian and Minority Ethnic family Covid-19 Helpline](#)

[Clearing up Covid-19 vaccine misinformation and scam alerts](#)

[Census temporary job opportunities](#)

[Book a benefits check ages 55+](#)

[The Camden Winter Night Shelter needs volunteers](#)

[Increasing data allowances on mobile devices to support disadvantaged children](#)

[Coronavirus testing and vaccine information](#)



## EXTRA SUPPORT

**Camden & Islington Crisis Line:** 0800 917 3333

**Samaritans:** free confidential support 24/7: 116 123

**Saneline:** out-of-hours mental health helpline:  
4.30pm to 10.30pm. Call on 0300 304 7000.

**The Help Hub** connects you with professional counsellors who are there to listen and support

**Camden Council** has a [useful website](#) that can help you find support

**Silver Cloud** have free programmes to help manage stress, sleep better, build resilience and cope during Covid-19. Use the pin CAMDEN

**Camden Mutual Aid groups:** Voluntary support for those who are vulnerable or self-isolating

[Hampstead and Kilburn Covid-19 Community Relief](#) (Facebook)

[Ravenshaw, Broomsleigh, Dornfell, Glastonbury Streets NW6](#) (WhatsApp)

[NW5](#) (Facebook)

[West Hampstead NW6 Community Help COVID 19](#) (WhatsApp)



0207 241 8996



healthymindscp@mindincamden.org.uk