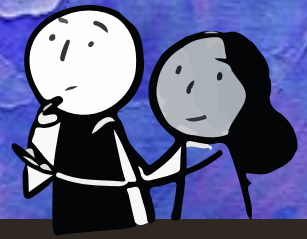


THE RESILIENCE

NETWORK

LONDON BOROUGH OF CAMDEN



DIGITAL / COLLECTIVE // 5TH JULY 2021

ABOUT D/C

Born out of a global pandemic, the digital collective is your weekly one-stop-shop, listing the very best FREE-to-access events, groups, classes and activities from the Camden Community. Just click on the [link](#) to access the FREE activity of your choice.

Scroll down for: Healthy Minds offers, community news and activities you can enjoy from home.



VoiceAbility



Likewise



MONDAY

6:30am until 7:30am [Online Yoga](#)

> Swiss Cottage

10am [Latin dance for BAME women](#)

> Pascal Theatre Company

11am until 11.30am [Virtual 'Cuppa' for Carers](#)

> Mobilise

1.30pm until 3pm [Men's cooking club](#)

> Abbey Community Centre

TUESDAY

6:30am until 7:30am [Online Yoga](#) > Swiss Cottage

10am until 11am [De-Stressing and Relaxing 50+](#)

> Third Age Project

10am until 11am [Tai chi 60+](#)

> Abbey Community Centre

11am until 1pm [LGBT+ drop-in](#)

> Islington Mind

12pm until 1pm [In person Gardening Workshops](#)

> Women + Health

1pm until 2pm [Facial Massage for women](#)

> Women + Health

2pm until 3pm [Art and Flow](#)

> Recovery College

2pm until 3pm [LGBT+ creative writing](#)

> Islington Mind

2.30pm until 3.30pm [Colouring Calm 60+](#)

> Abbey Community Centre

4pm until 4.30pm [Virtual 'Cuppa' for Carers](#)

> Mobilise

4pm until 6pm [Online Talk for Health Taster:](#)

[Learn to Talk for a Fit Mind](#) > Talk for Health

WEDNESDAY

6:30am until 7:30am [Online Yoga](#) > Swiss Cottage

10am until 11am [Wake Up Wednesday for women](#)

> Women + Health

10am until 12pm [Carers art group](#)

> Holborn Community Association

10:30am [Gentle Movement/Chair Based Exercise for BAME women](#) > Pascal Theatre Company

11am until 12pm [Seated exercise 60+](#)

> Abbey Community Centre

11:30am until 12:30pm [Men's Fitness](#)

> Abbey Community Centre

2pm until 3pm [Making the most of your money](#)

> Recovery College

2pm until 3:30pm **Freedom to Make** (virtual knitting & textiles workshops) > Free Space Project

4pm until 4.30pm **Virtual 'Cuppa' for Carers**
> Mobilise

4pm until 5pm **The Minded Clinic online classes**
> The Minded Clinic

6:30pm until 7:30pm **Yoga Nidra for men and women** > Women + Health

6:30pm until 8pm **Five ways social media is changing your brain** > Inside Out

7pm **Michael Pollan and Monty Don - This Is Your Mind On Plants** > 5x15

THURSDAY

6:30am until 7:30am **Online Yoga**
> Swiss Cottage

11am until 12pm **Dealing with difficult emotions**
> Recovery College

1pm until 2:30pm **Cooking Class**
> Abbey Community Centre

1:30pm until 2pm **LGBT+ yoga**
> Islington Mind

1:45pm **Tai Chi**
> West Euston Partnership

3:30pm until 4.30pm **Re-cycle-art class**
> Abbey Community Centre

4pm until 4.30pm **Virtual 'Cuppa' for Carers**
> Mobilise

FRIDAY

6:30am until 7:30am **Online Yoga**
> Swiss Cottage

12pm until 1pm **Art History**
> Golden Years

12:30pm until 1pm **Virtual Cuppa for Carers**
> Mobilise

4pm until 4:30pm **Virtual Cuppa for Carers**
> Mobilise



TRY IT OUT



[Loudest Whispers Exhibition](#)

[LGBTQ+ heritage map of Islington](#)

[Coping with loneliness](#)

[Camden Carers art exhibition](#)

[A Guide To Gender Identity Terms](#)

[Training Link free courses](#)

[Free To Be project and film](#)

[Mental Health and Physical Activity Toolkit](#)





[Hopscotch Women's Centre yoga and zumba classes](#)

[Castlehaven July timetable](#)

[What's On at West Euston Partnership](#)

[Golden Years July programme](#)

[Post-Impressionist Artists in London 20 July](#)

[A Musical History of Modern Black Britain in 28 Songs 21 July](#)

[Consortium LGBT+ Women & Non-Binary Network 21 July](#)



**UPCOMING
EVENTS**

**COMMUNITY
NEWS**



[Coronavirus vaccination information](#)

[Have your say on Mount Pleasant Pocket Park](#)

[Loneliness Awareness Week 2021](#)

[Free summer courses for young people](#)

[Camden Employment Support](#)

[Free art therapy](#)

[Rapid COVID-19 tests appointments and home test kits](#)

[Have your say on nature in Camden](#)



EXTRA SUPPORT

Camden & Islington Crisis Line: 0800 917 3333

Samaritans: free confidential support 24/7: 116 123

Saneline: out-of-hours mental health helpline:
4.30pm to 10.30pm. Call on 0300 304 7000.

The Help Hub connects you with professional counsellors who are there to listen and support

Camden Council has a [useful website](#) that can help you find support

Silver Cloud have free programmes to help manage stress, sleep better, build resilience and cope during Covid-19. Use the pin CAMDEN

Camden Mutual Aid groups: Voluntary support for those who are vulnerable or self-isolating

[Hampstead and Kilburn Covid-19 Community Relief](#) (Facebook)

[Ravenshaw, Broomsleigh, Dornfell, Glastonbury Streets NW6](#) (WhatsApp)

[NW5](#) (Facebook)

[West Hampstead NW6 Community Help COVID 19](#) (WhatsApp)



0207 241 8996



healthymindscp@mindincamden.org.uk